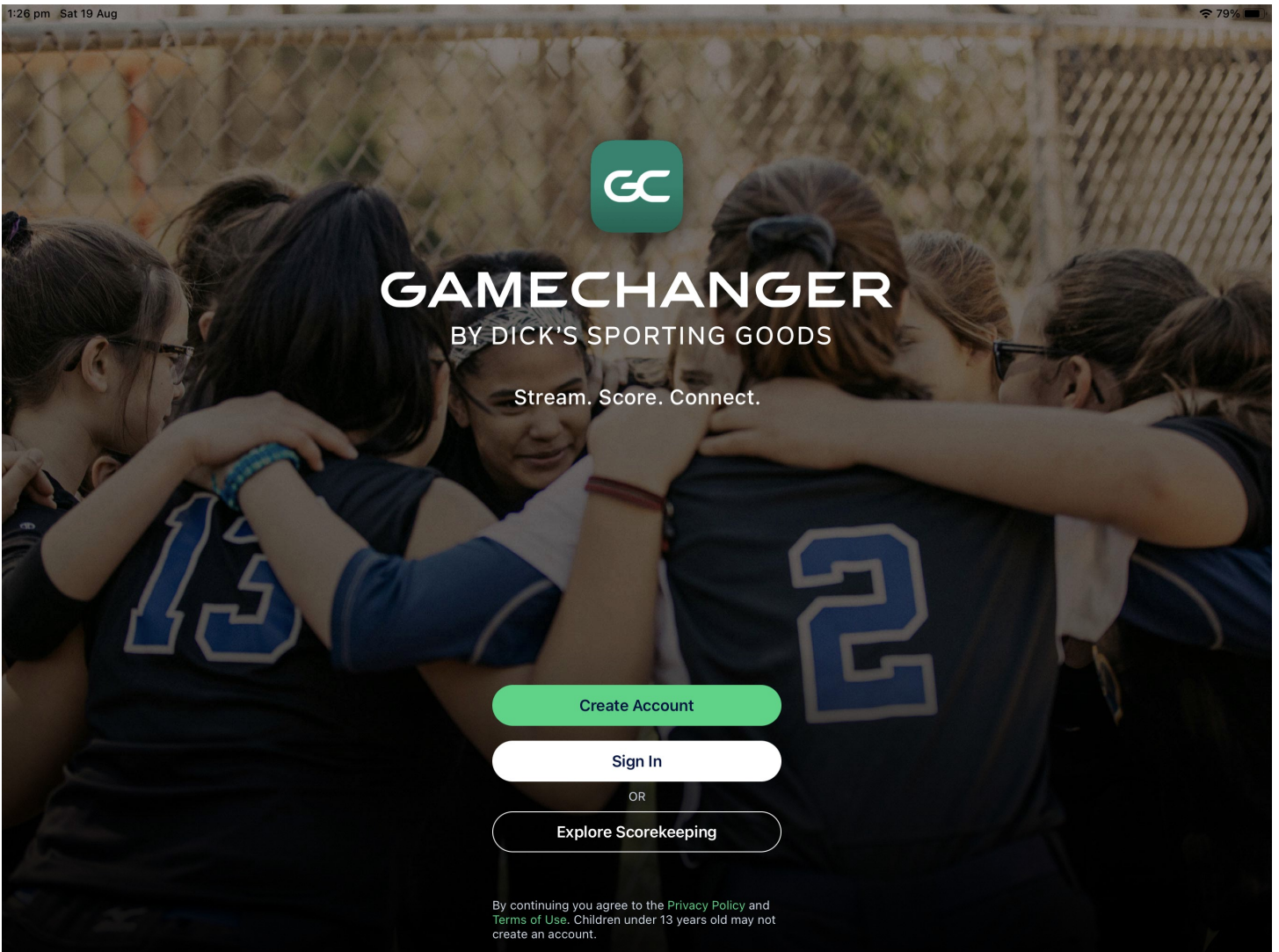


GAMECHANGER—LINE UPS, SUBSTITUTIONS and FIELDING CHANGES

This How To document covers entering a teams line up, making substitutions and fielding changes during the game.



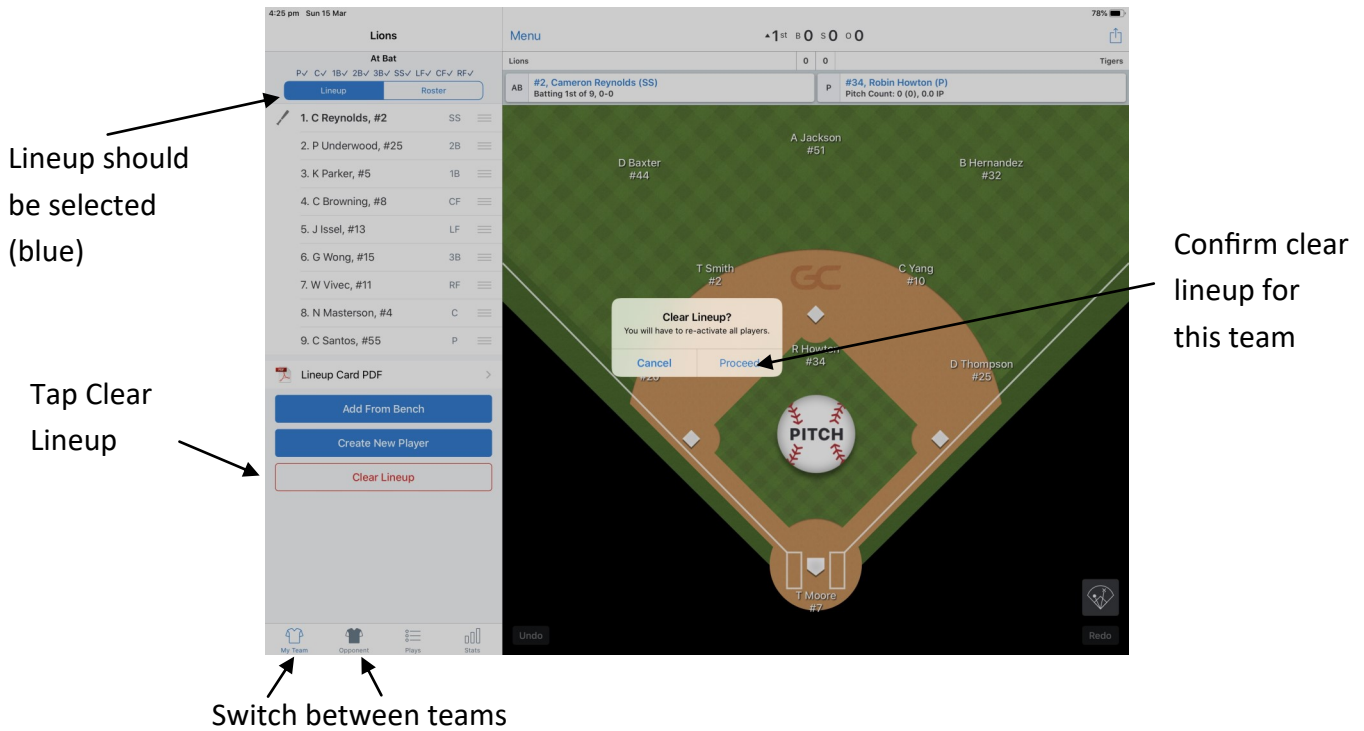
Please note: the options available may differ to those shown due to the game situation or when using the practice game.

LINE UPS

Line ups are to be entered for both teams in the side section of the main screen. A teams line up is entered in batting order, then players are allocated their fielding positions.

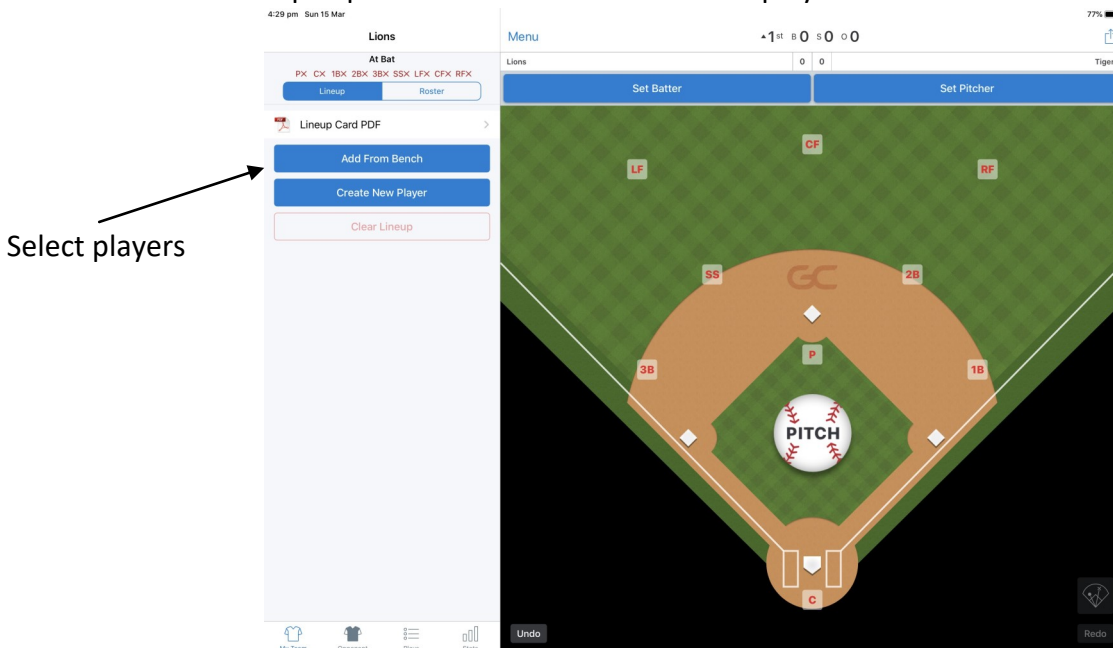
Tap the team buttons at the bottom of the screen to switch between teams.

If the line up has pre-loaded and is not required, tap Clear Lineup, then tap Proceed.



Batting

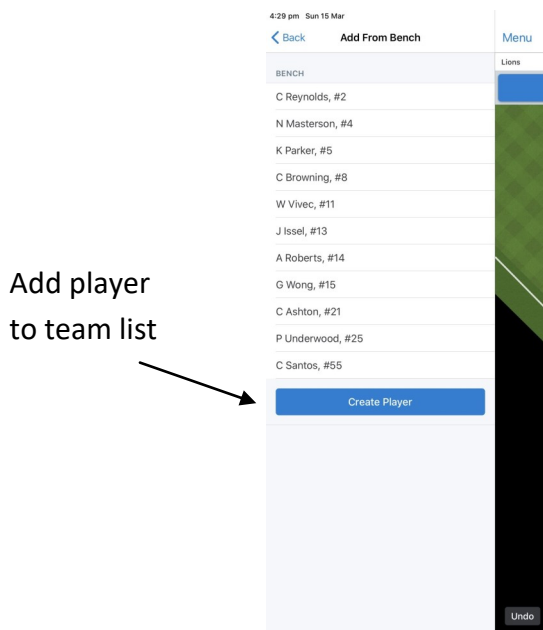
To enter a teams line up Tap Add From Bench to select the players.



LINE UPS

Batting (cont.)

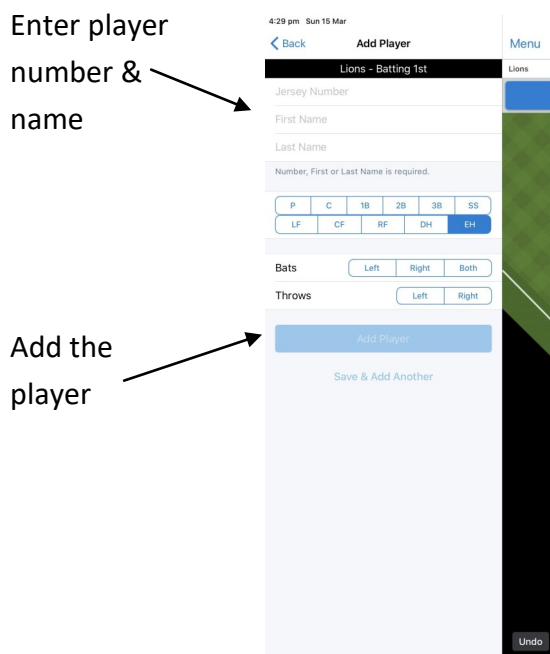
Players will be listed in uniform number order. Tap each player in the starting line up - in batting order. If a player is not listed, tap Create Player. If you have a DH, **do not** select the player they are batting for.



Create player

Enter the details required for the player—uniform number, first name and surname only . Leave the position as EH. Bats and throws are not required to add the player and can be changed later in the roster if needed.

Tap Add Player. The player will automatically be selected in the batting line up.



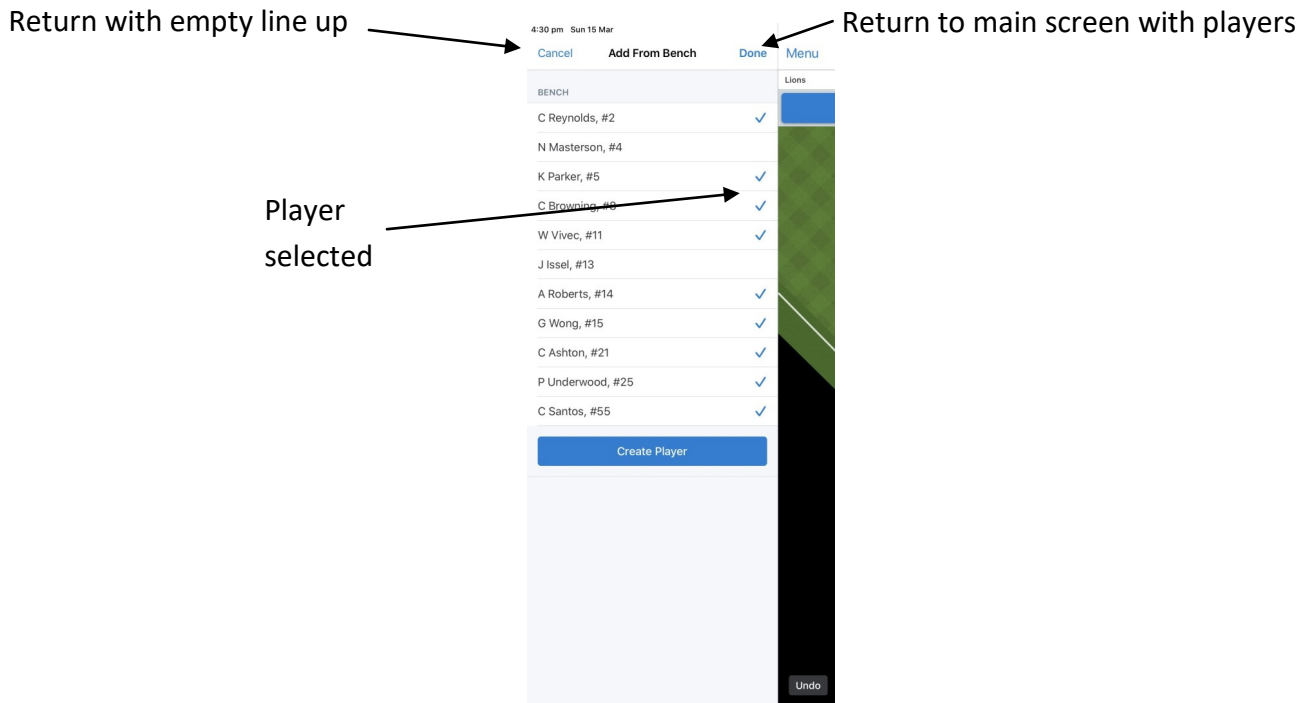
LINE UPS

Batting (cont.)

The selected players will be ticked. If a player is selected in error, tap again and the tick will be removed.

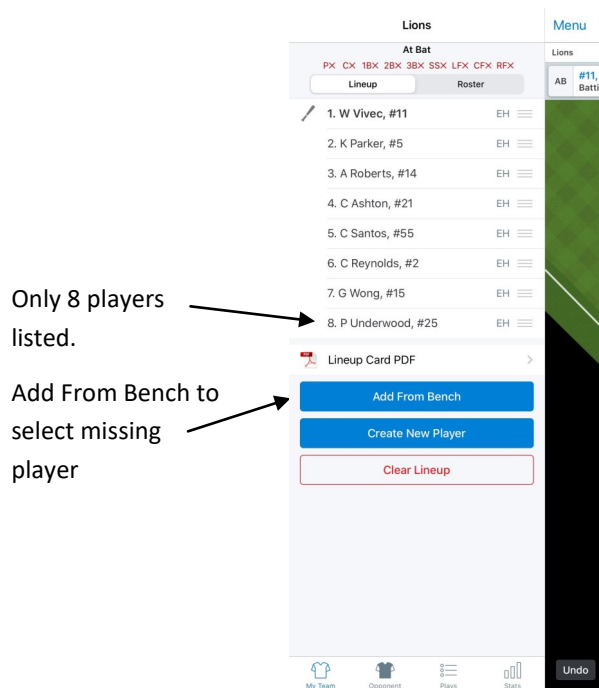
Tap Done when all batters have been selected. The side section will now display the batting line up.

Tap Cancel to de-select all players and return with an empty line up.



Check the line up has the correct number of players in the correct batting order.

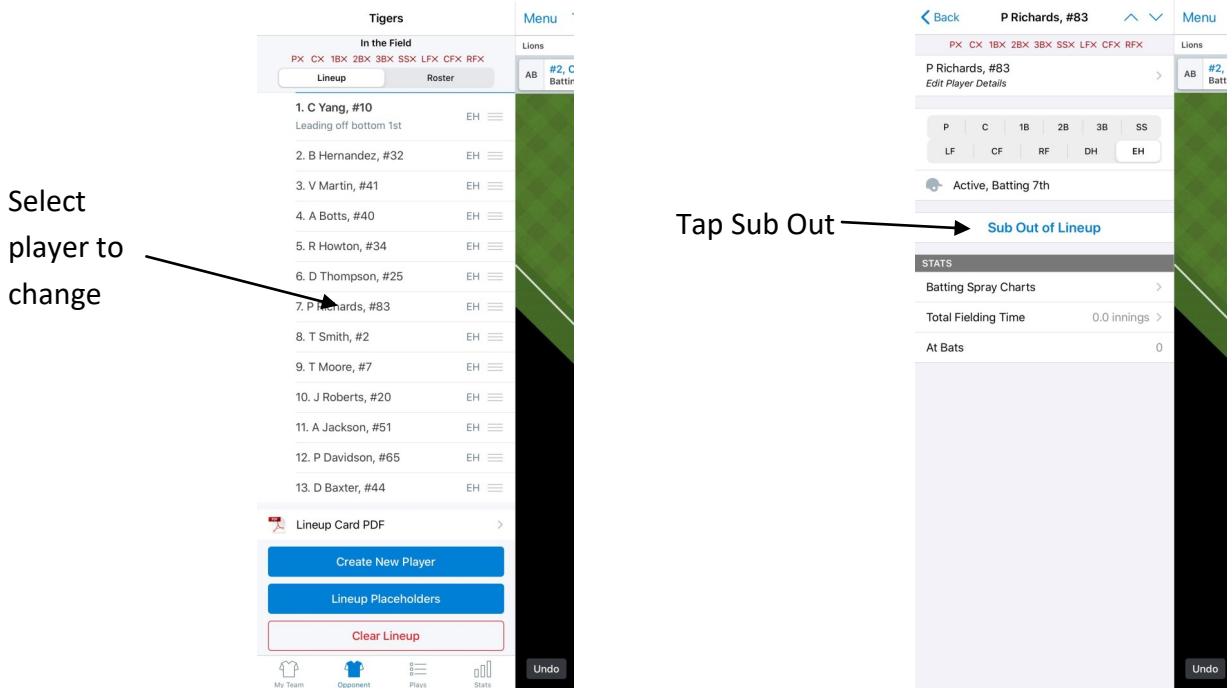
If a player is missing, tap Add From Bench and select/create the player—they will be added at the bottom.



LINE UPS

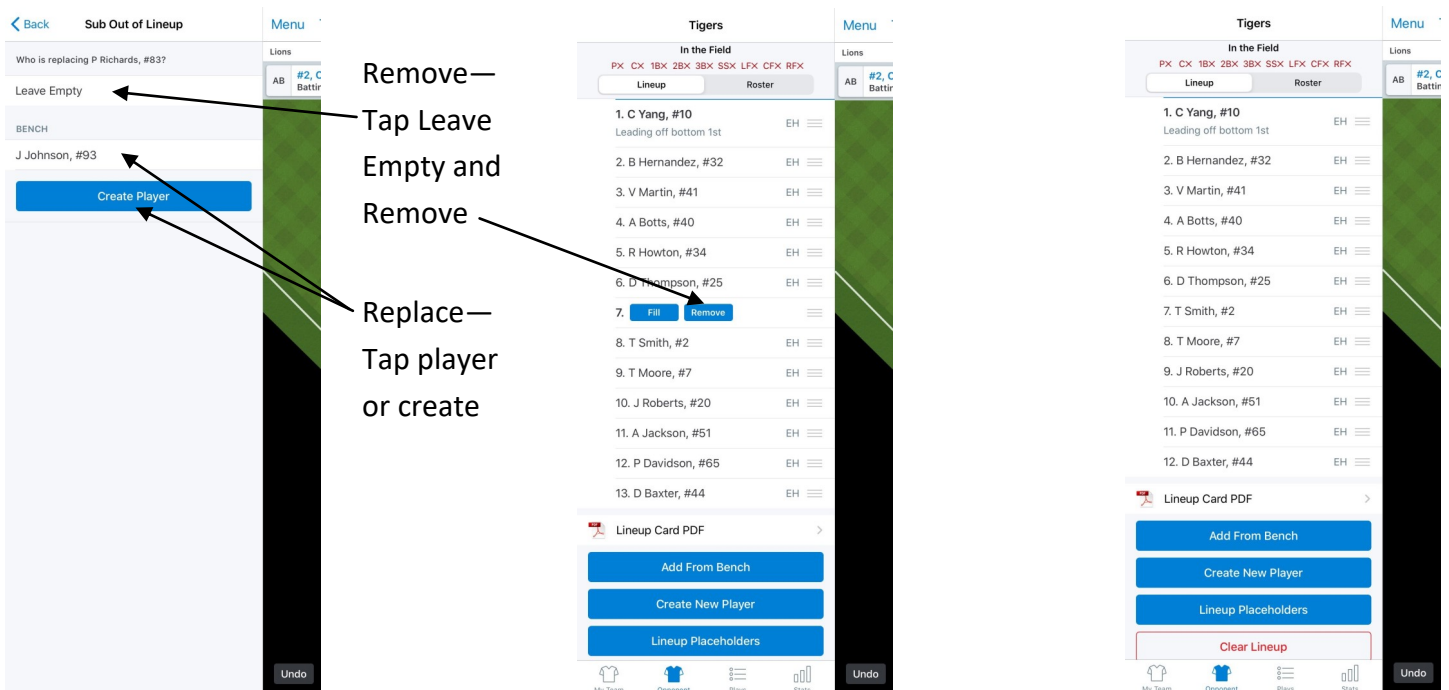
Batting (cont.)

If a player is shown in the line up and needs to be removed or replaced by another player, tap the players name. Tap Sub Out of Lineup.



To remove the player, tap Leave Empty, then tap Remove in the line up.

To replace the player, tap the required players name or create the player. The line up will show the newly selected player.

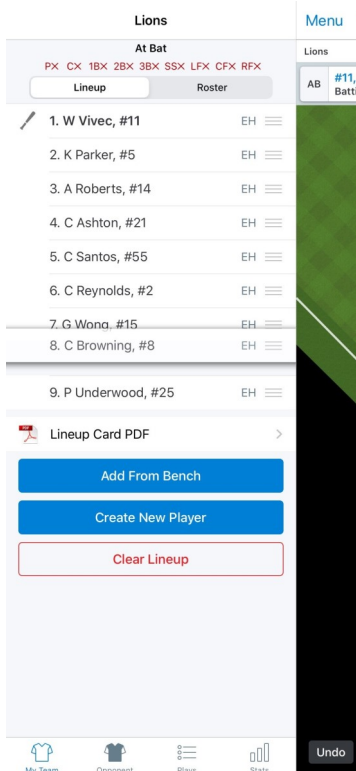
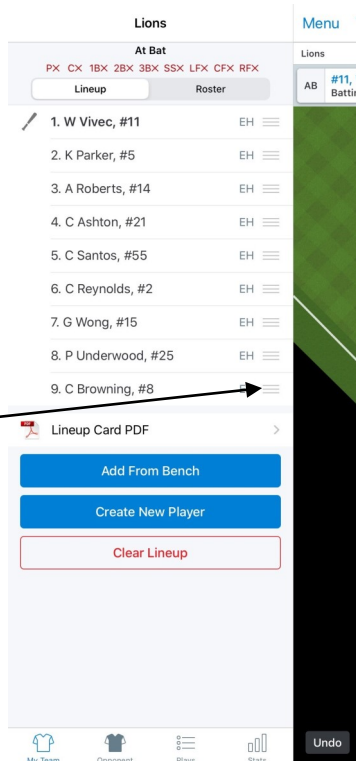


LINE UPS

Batting (cont.)

If a player is not in the correct batting position, tap and hold the 3 lines for that player and drag them into the correct spot—the batting position number will change as they move. Let go once they have the correct batting position number.

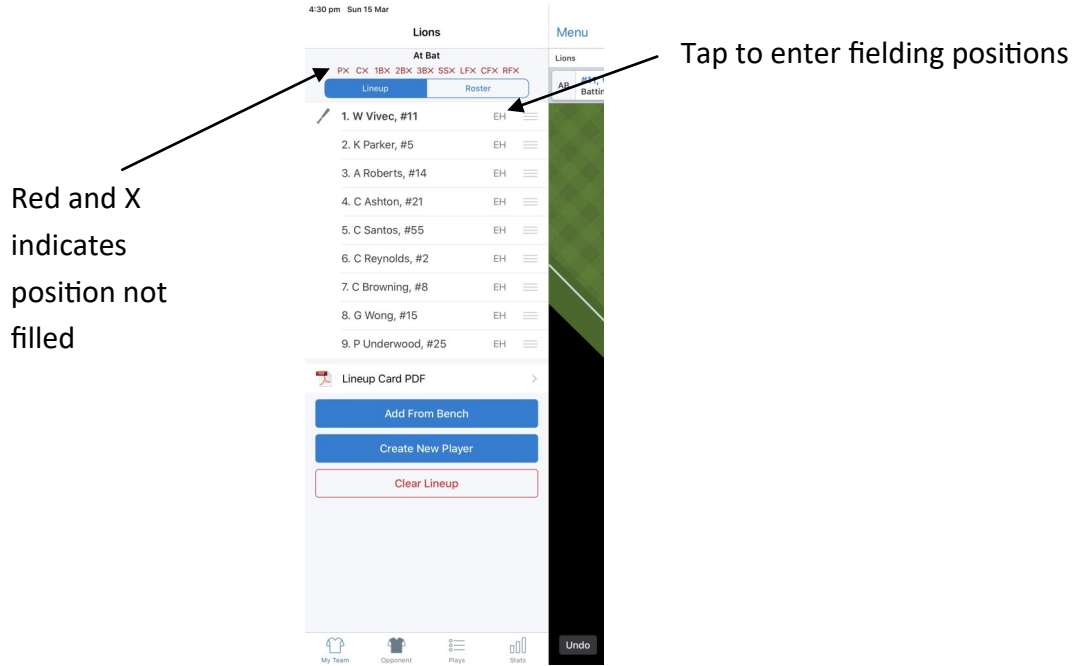
Tap, hold
and drag
player



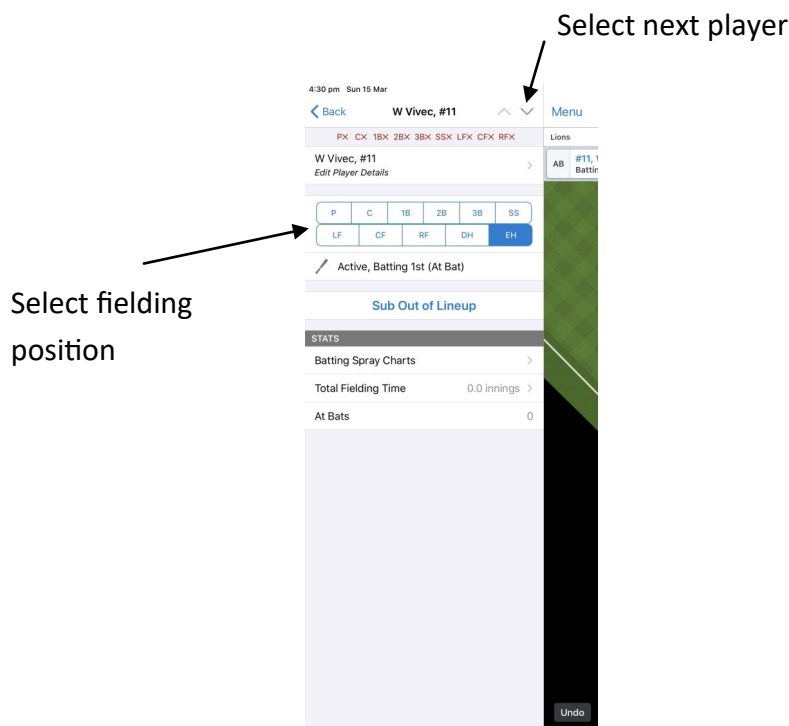
LINE UPS

Fielding Positions

All players will be listed with a fielding position of EH (extra hitter). Tap EH for the first player to enter the fielding positions for all players in the starting line up.



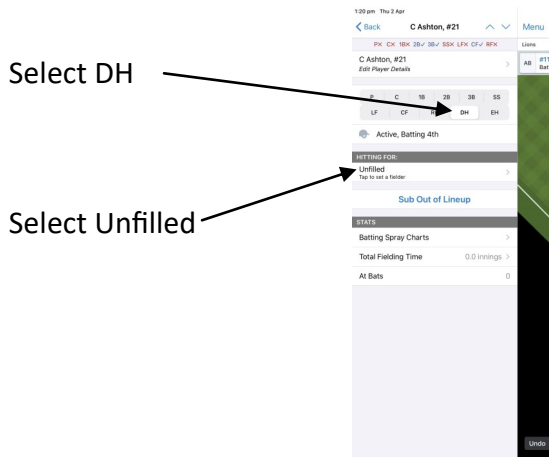
Tap the required position for that player. Move to the next player by tapping the down arrow. Leave the position as EH if the team is batting more than 9 and that player is not starting in the field.



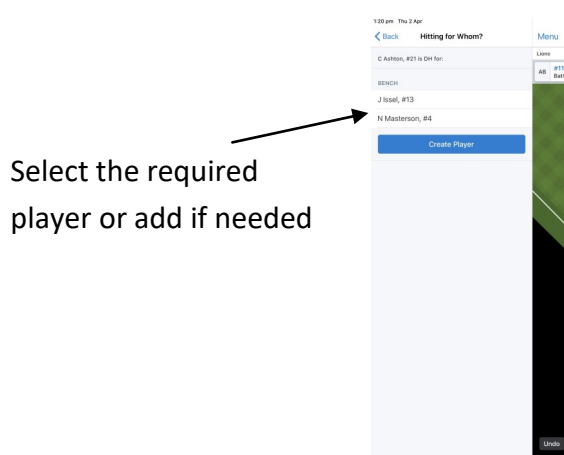
LINE UPS

Fielding Positions—Designated Hitter (DH)

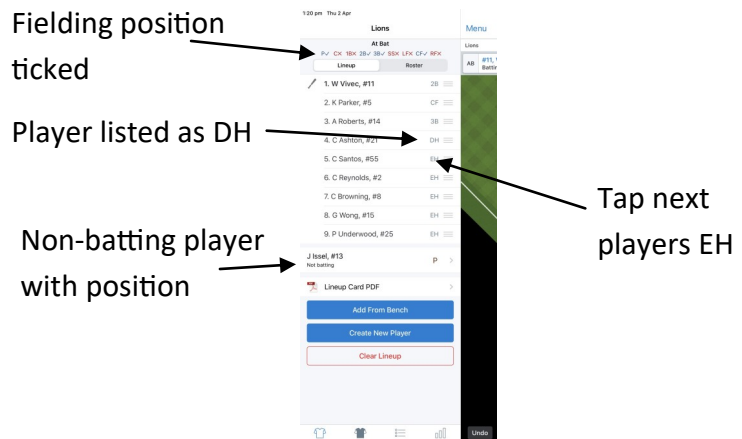
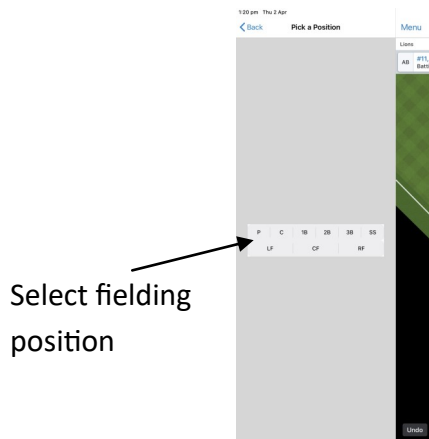
If a player is the Designated Hitter, tap the fielding position DH. The Batting For section will appear. Tap Unfilled.



Players not already selected in the line up will be listed. Tap the player that the DH is batting for.



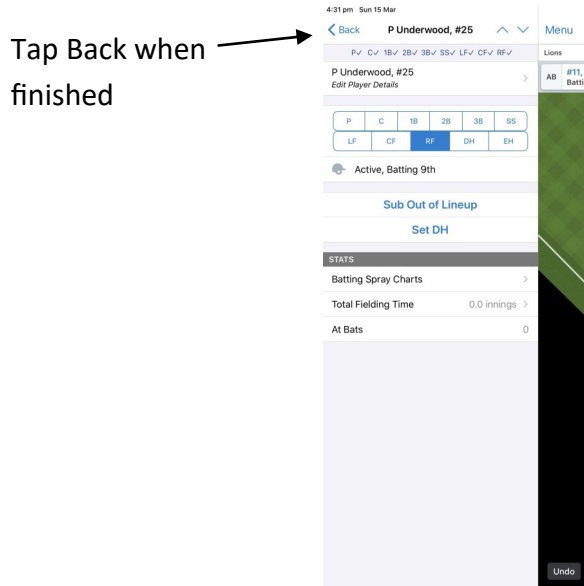
Tap the fielding position for the non-batting player. The side section will display the batting line up with fielding positions entered so far. Tap the next player with EH to continue with the fielding positions for the rest of the team.



LINE UPS

Fielding Positions (cont.)

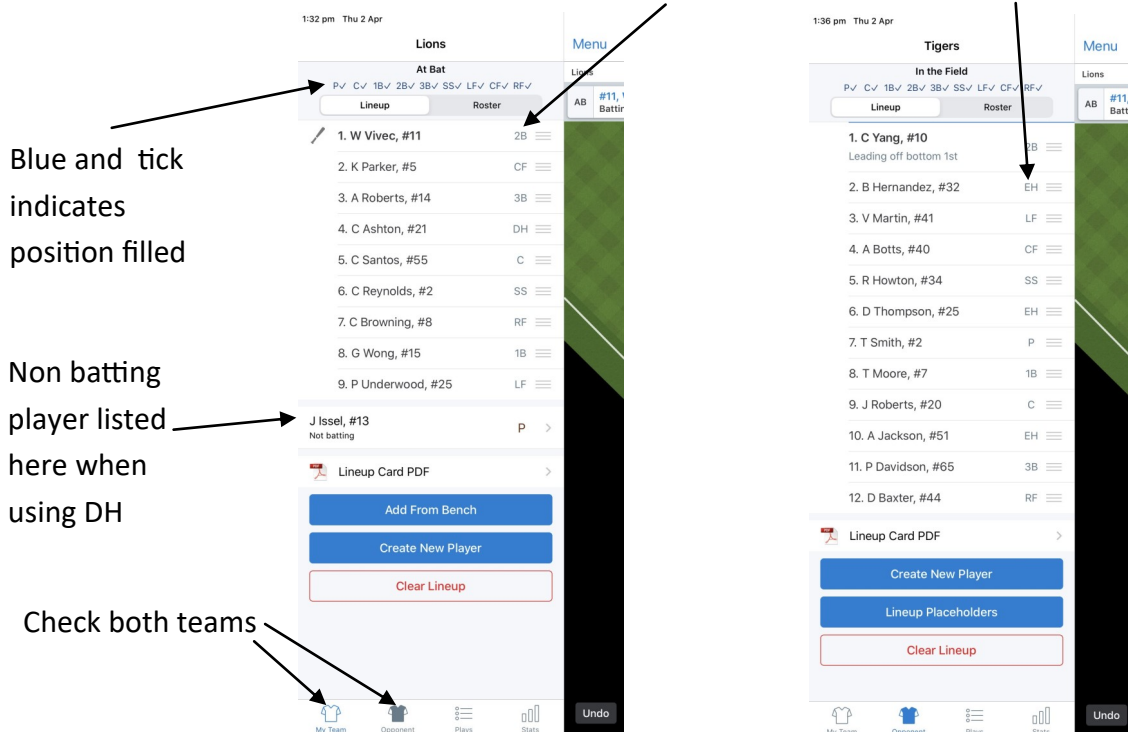
On the last player in the line up, the down arrow will be disabled. Tap Back—the side section will now display the batting line up with fielding positions.



Check all fielding players have the correct position allocated or EH if batting and not fielding. If a fielding position is incorrect, tap the players name and change the position. Another player will now have a position of EH that will also need to be corrected.

Ensure both teams have been entered by using the team buttons to switch between teams.

Check fielding positions—only have EH when batting more than 9



SUBSTITUTIONS and FIELDING CHANGES

Player substitutions and fielding changes can be entered in several ways; using the side, top or field section of the main screen. One method is not better than another—choose the method you feel most comfortable using.

Make the changes in your scorebook first (or write them down) and then apply them in GameChanger.

Use the Undo button at the bottom of the field screen to delete an unwanted change.

Make any player substitutions first, then any fielding changes. *Exception: when the pitcher is replaced by a bench player who goes to the field and an existing fielder becomes the pitcher—move the fielder to the pitching spot first, then make the player substitution, then make any other fielding changes.*

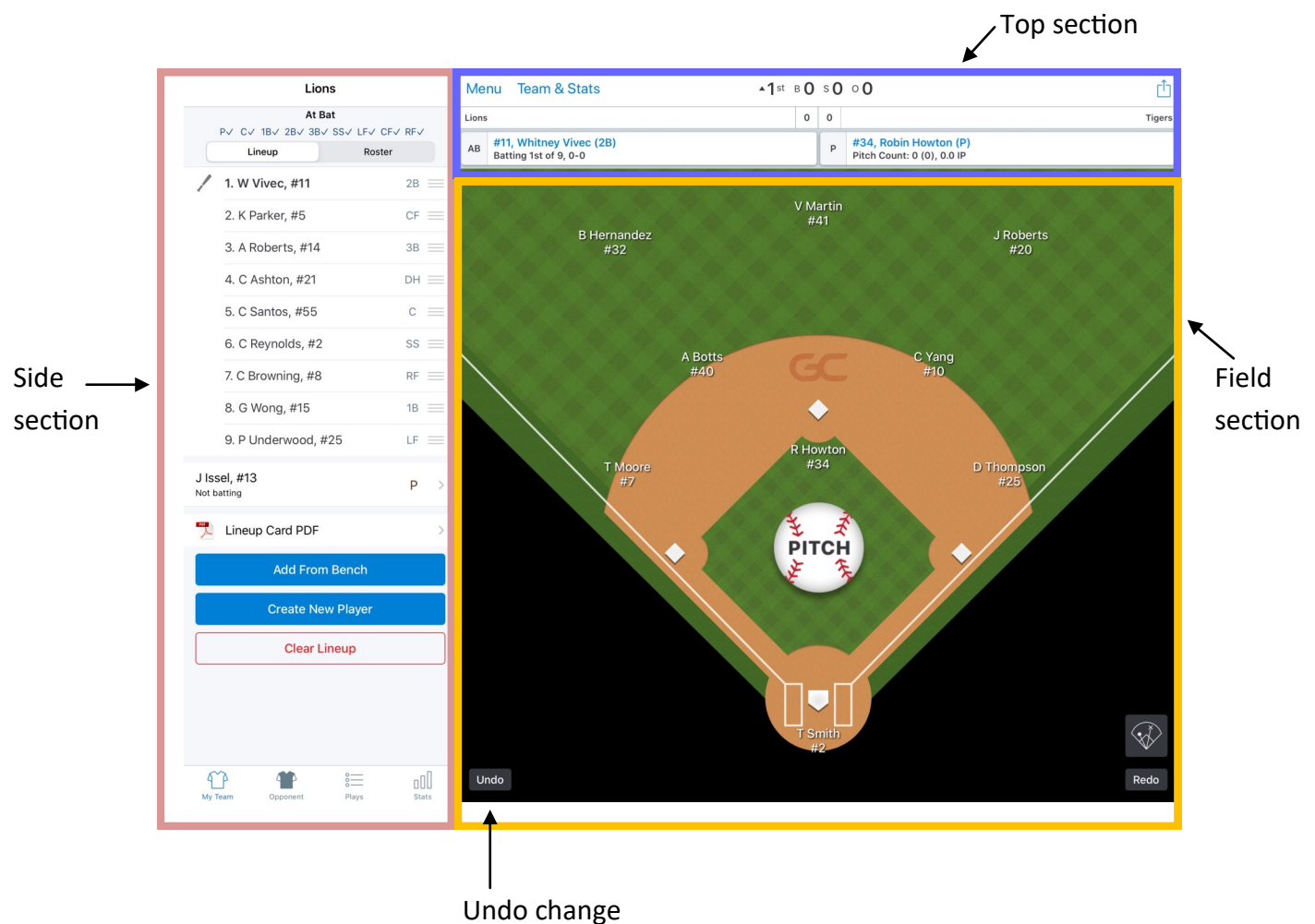
Once all changes have been done, use the line up in the side section to check that changes have been entered correctly.

Note that the play-by-play cannot be used for checking changes:

Fielding changes are not shown.

Batting changes are not explicitly shown—the batters name is just changed.

Pitching changes are not shown. The pitchers name is shown in the text of some plays but not all.



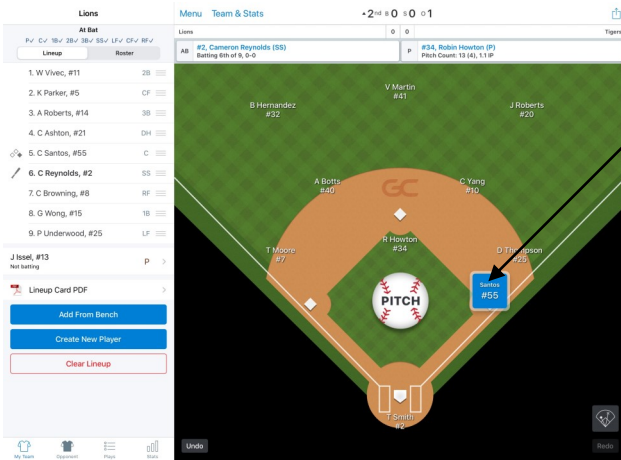
SUBSTITUTIONS and FIELDING CHANGES

Sub—Pinch Runner

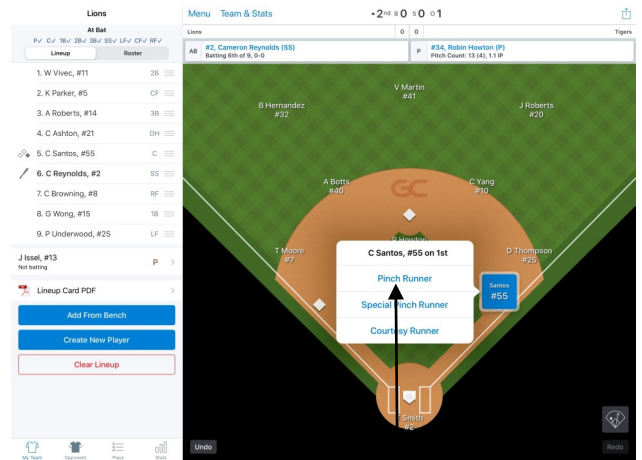
Field section—tap on the runners blue box. Tap Pinch Runner. Select the player coming into the game (or create the player if needed).

Note that the new player will automatically be subbed into the line up in the same fielding position as the replaced player and may need to be changed when the team takes the field.

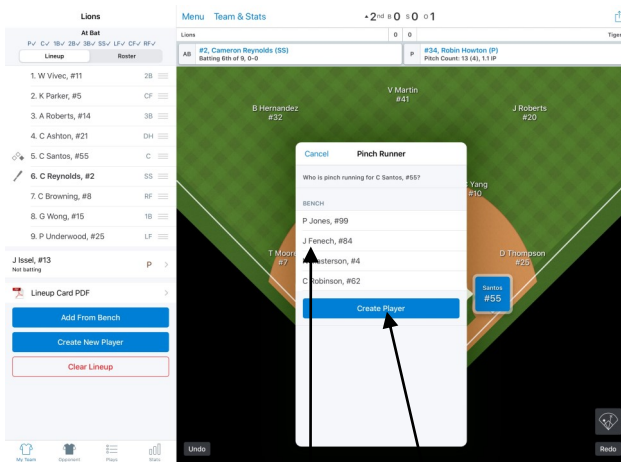
Tap Special Pinch Runner or Courtesy Runner when the player enters the game as a runner only (not a player substitution)



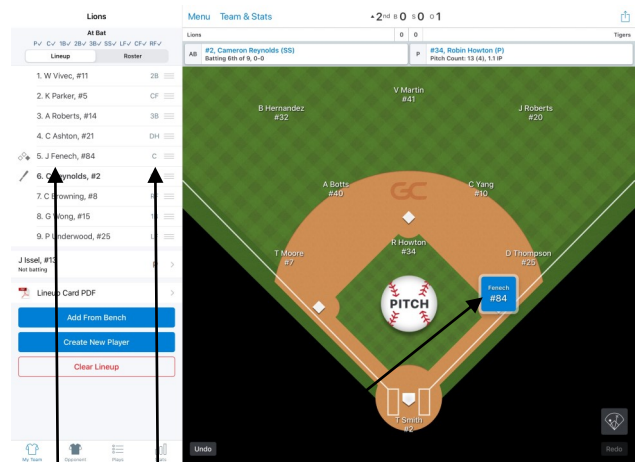
Select the runner



Tap Pinch Runner



Select the player or add if needed



Player changed with same fielding position

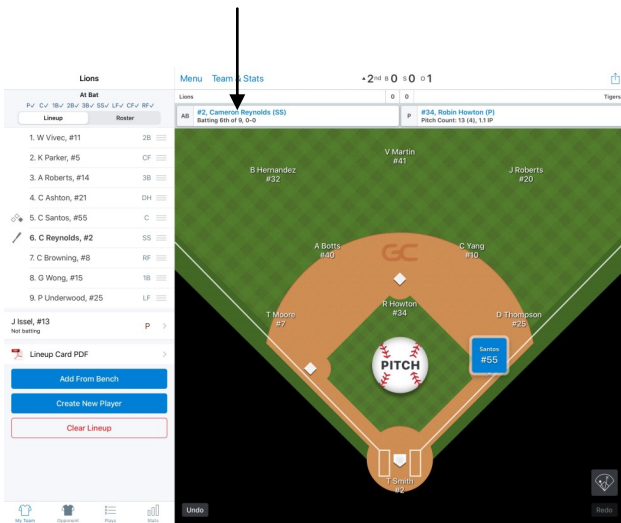
SUBSTITUTIONS and FIELDING CHANGES

Sub—Pinch Hitter

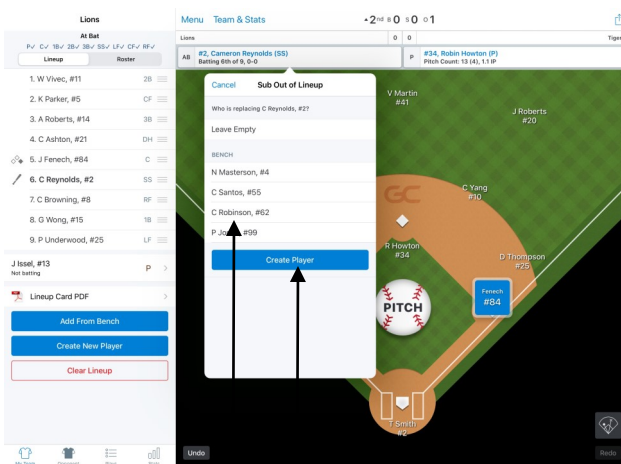
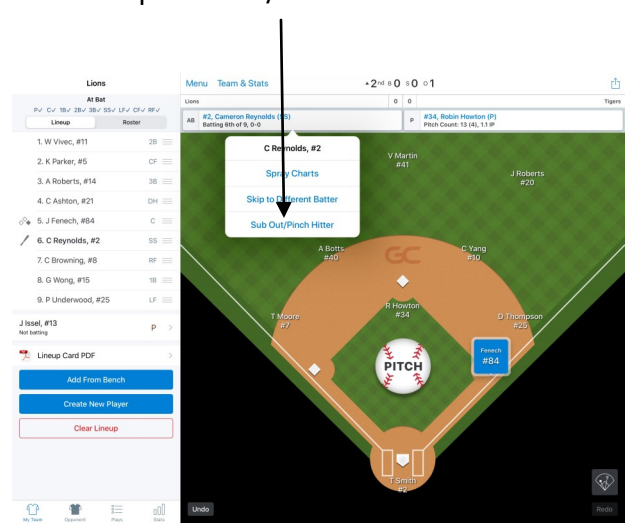
Top section—tap the AB box. Tap Sub Out/Pinch Hitter. Select the player coming into the game (or create the player if needed).

Note that the new player will automatically be subbed into the line up in the same fielding position as the replaced player and may need to be changed when the team takes the field.

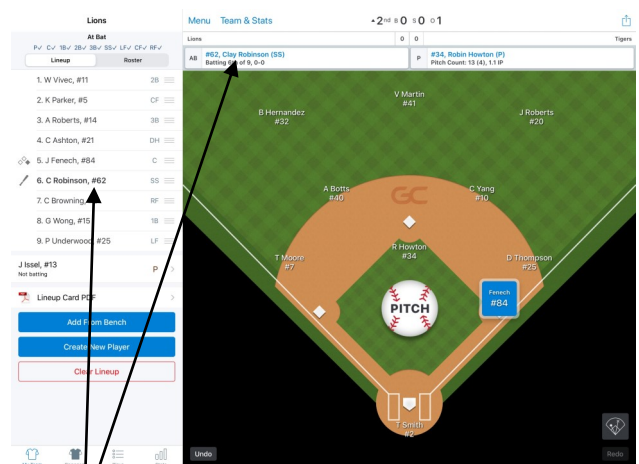
Select the batter



Tap Sub Out/Pinch Hitter



Select the player or add if needed



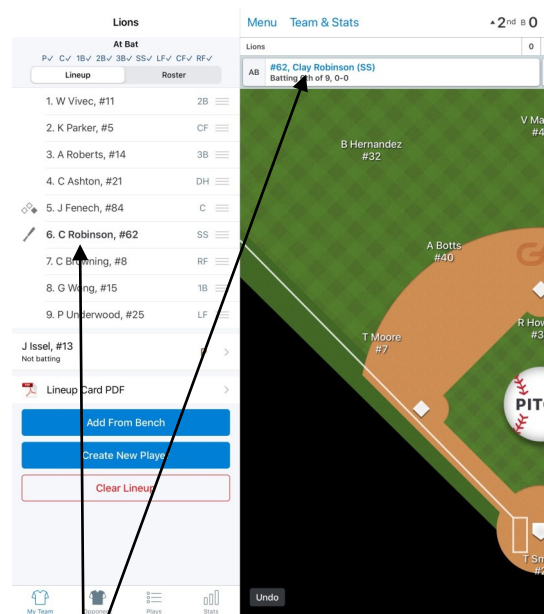
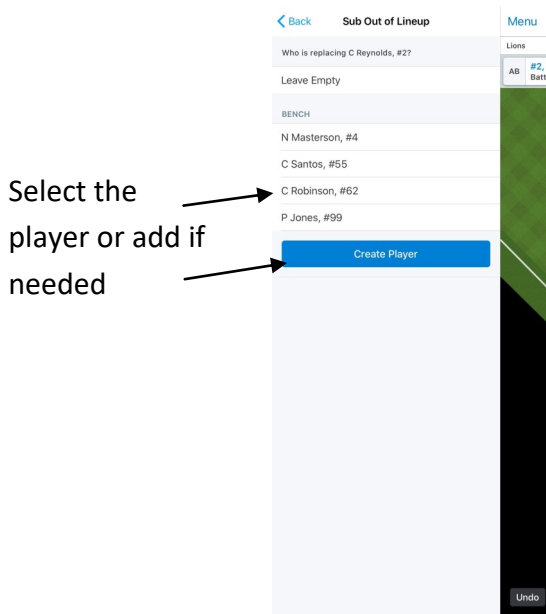
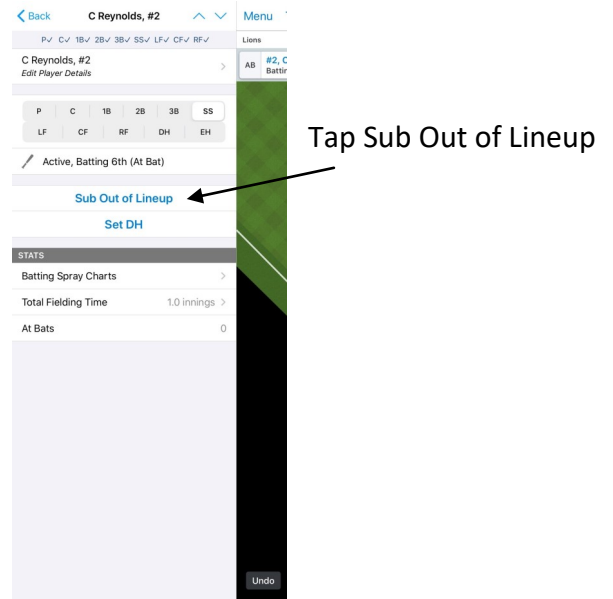
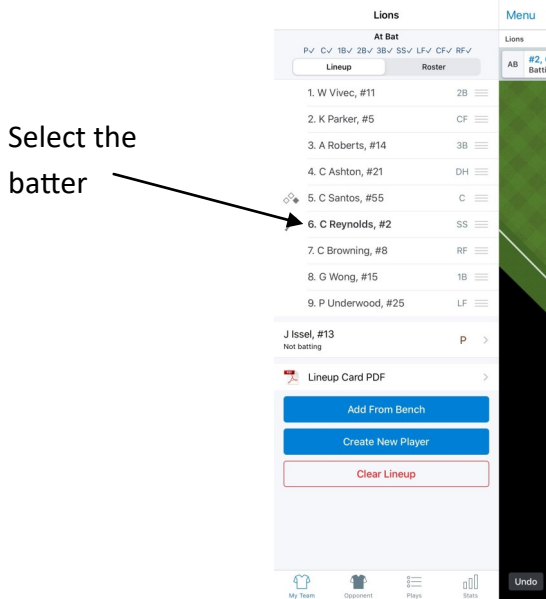
Player changed with same fielding position

SUBSTITUTIONS and FIELDING CHANGES

Sub—Pinch Hitter (cont.)

Side section—tap the name of the player to be replaced. Tap Sub Out of Lineup. Select the player coming into the game (or create the player if needed).

Note that the new player will automatically be subbed into the line up in the same fielding position as the replaced player and may need to be changed when the team takes the field.

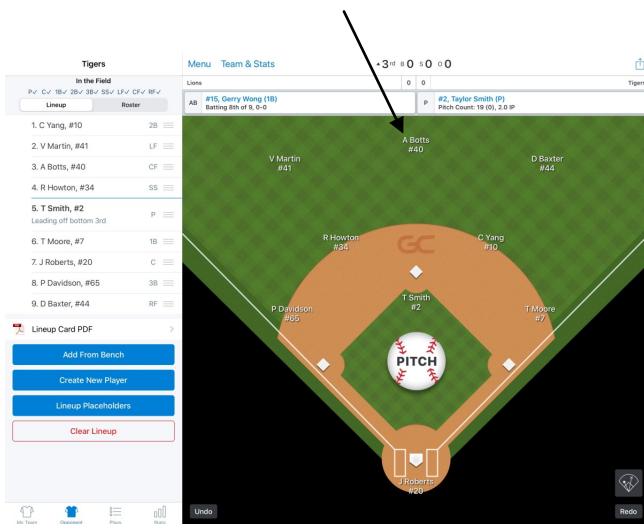


SUBSTITUTIONS and FIELDING CHANGES

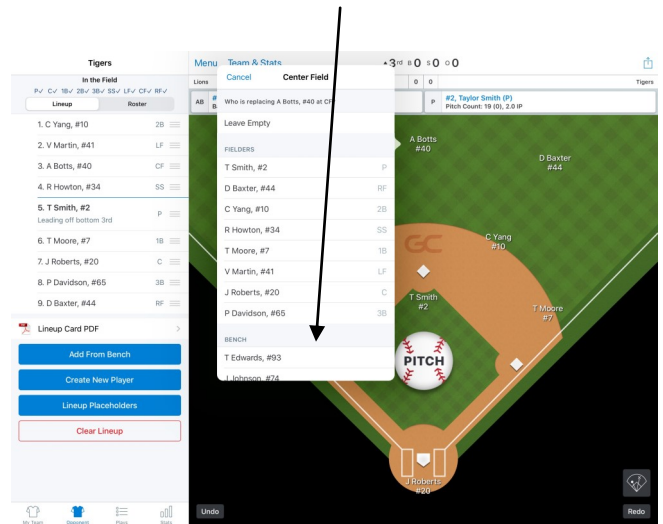
Sub-Player in the Field

Field section—tap the player being replaced. Tap the player coming into the game—scroll down to see all players available listed under Bench (or create the player if needed). Tap Yes, that's correct to place the player in the same position in the batting line up.

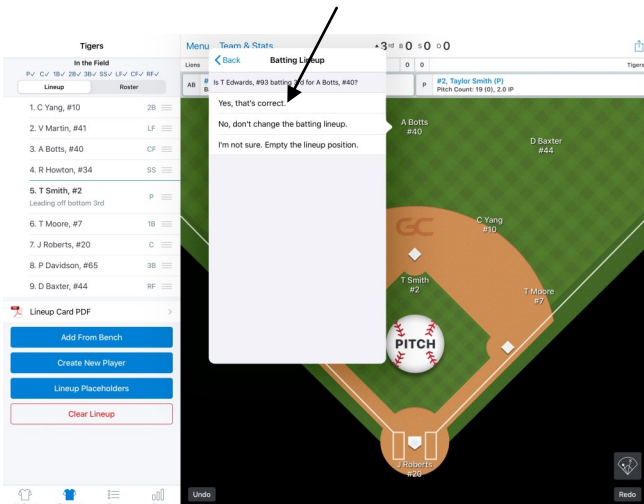
Select fielder being replaced



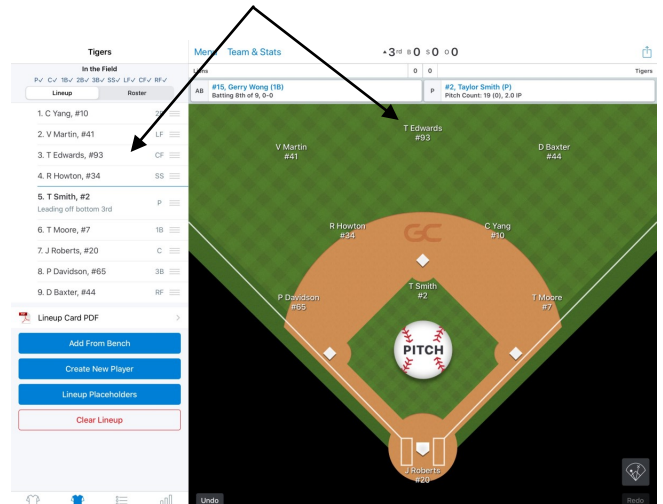
Select player now fielding or add if needed



Tap Yes to sub in same batting position



Player changed

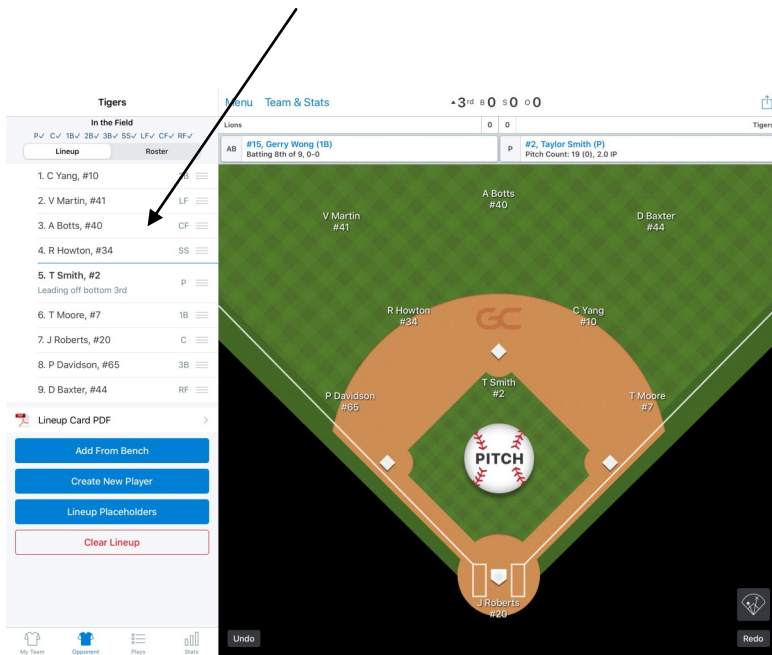


SUBSTITUTIONS and FIELDING CHANGES

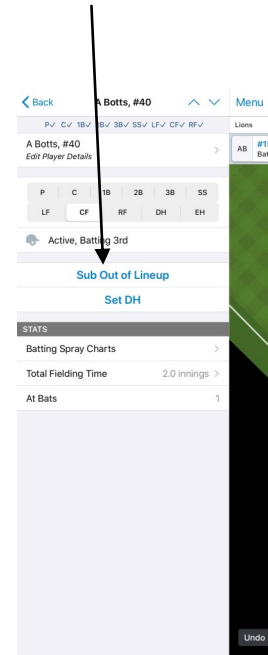
Sub-Player in the Field (cont.)

Side section—tap the player being replaced. Tap Sub Out of Lineup. Tap the player coming into the game—scroll down to see all players available listed under Bench (or create the player if needed).

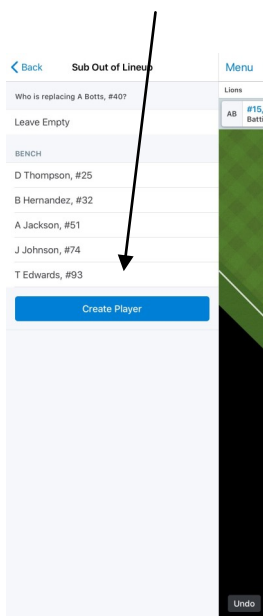
Select fielder being replaced



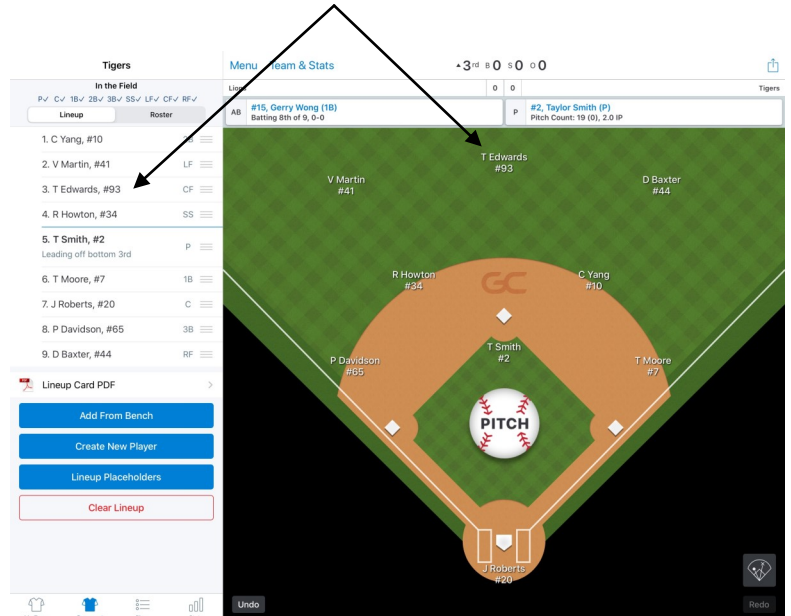
Tap Sub Out of Lineup



Select player now fielding or add if needed



Player changed



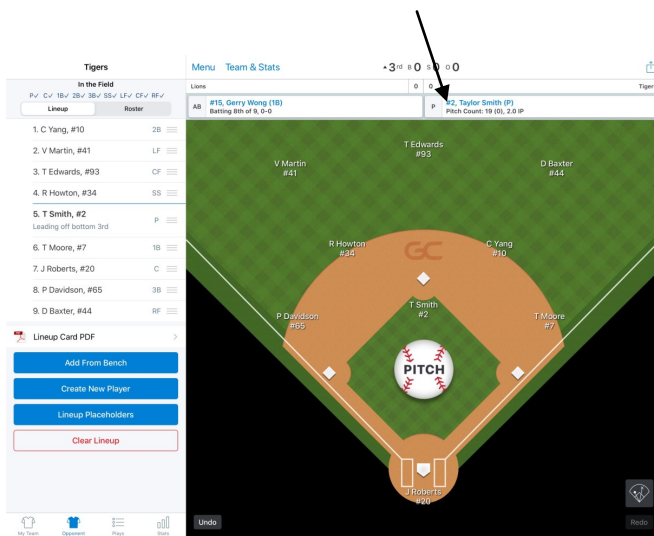
SUBSTITUTIONS and FIELDING CHANGES

Sub-Pitcher

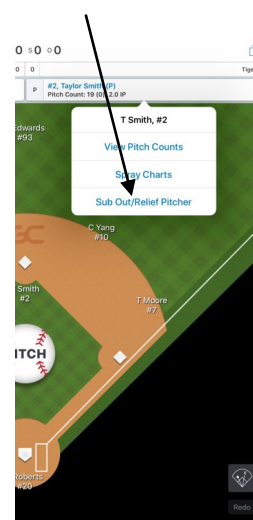
When the pitcher is replaced by a bench player who will become the new pitcher, the change can be done as per Sub-Player in the Field or using the top section.

Tap the P box. Tap Sub Out/Relief Pitcher. Tap the player coming into the game—scroll down to see all players available listed under Bench (or create the player if needed). Tap Yes, that's correct to place the player in the same position in the batting line up (will not appear if using the DH for the pitcher).

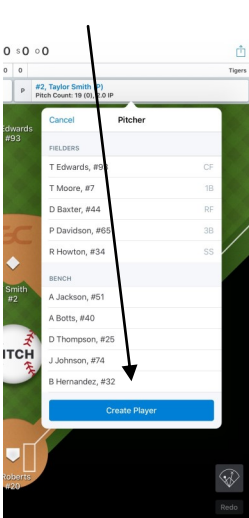
Select the pitcher



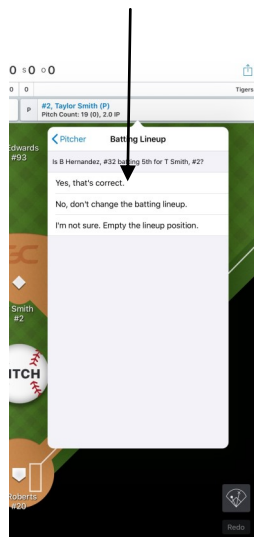
Tap Sub Out/Relief Pitcher



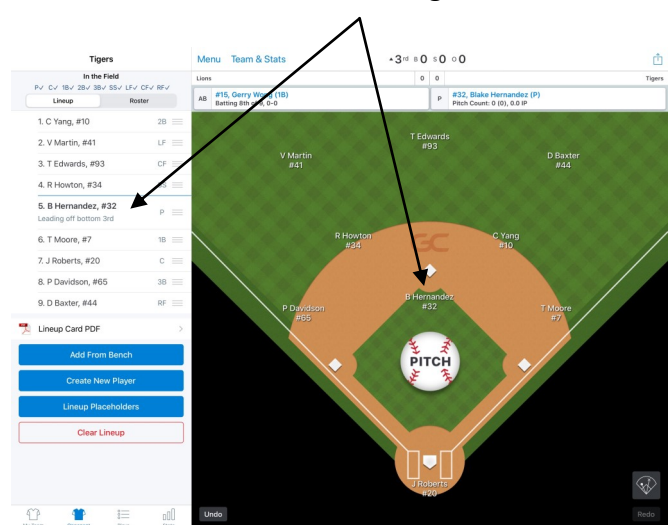
Select player now pitching or add if needed



Tap Yes to sub in same batting position



Pitcher changed



SUBSTITUTIONS and FIELDING CHANGES

Fielding Changes

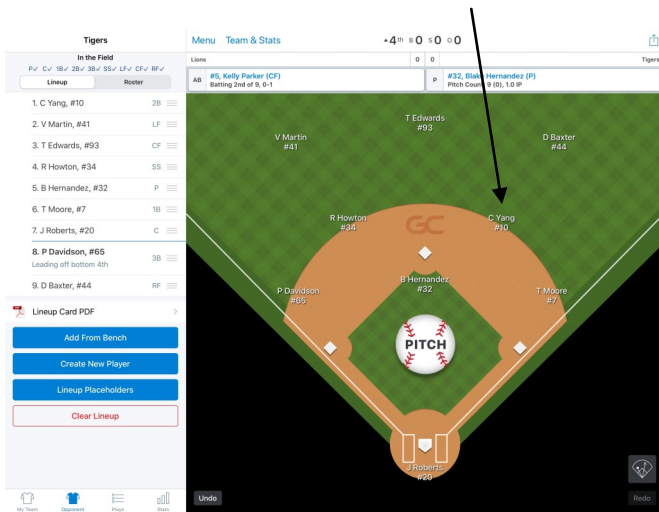
Field section—changes must be done in sequence: A to B, B to C, C to D, D to A.

Tap the first position in the change sequence. Tap Leave Empty—no player shown at this fielding position.

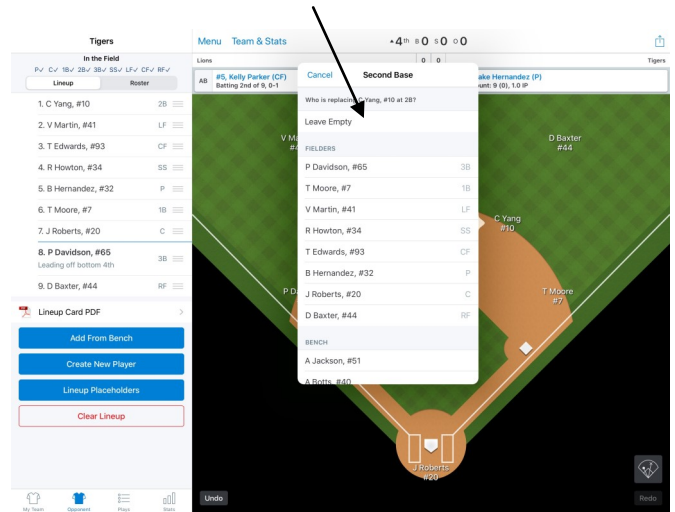
Tap the next position in the change sequence. Tap the players name under Batters Without Positions—player shown at new fielding position. Repeat until all changes have been made (the last position will be the empty first position).

Example: 4-3, 3-9, 9-4

Select first position (eg=4)

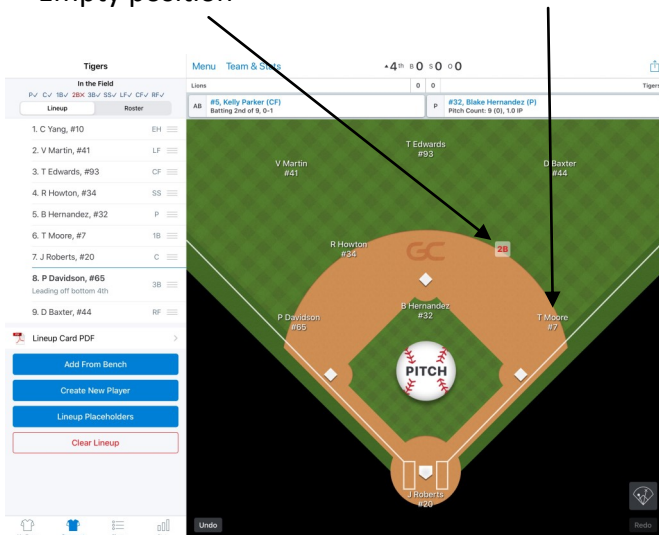


Tap Leave Empty

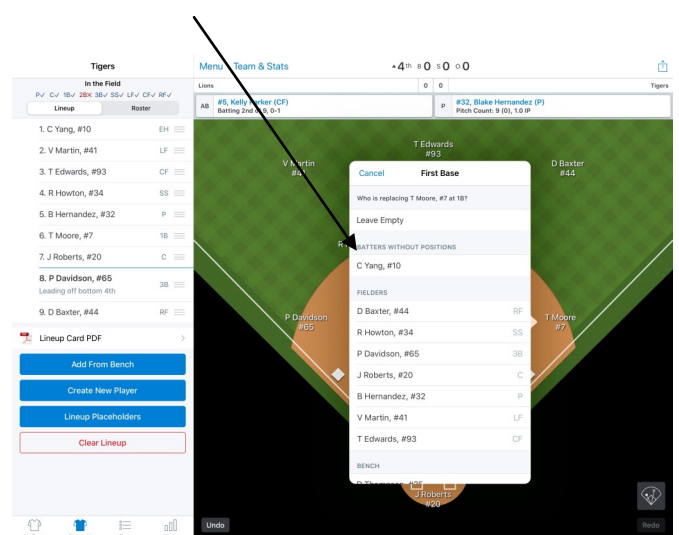


Empty position

Tap next position (eg=3)



Select player—Batters without positions



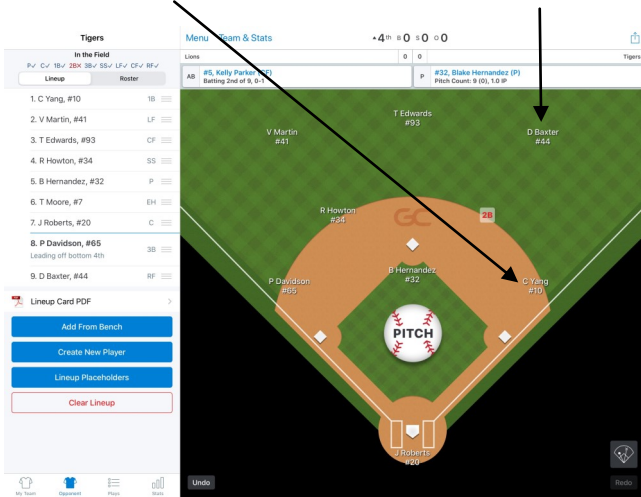
SUBSTITUTIONS and FIELDING CHANGES

Fielding Changes (cont.)

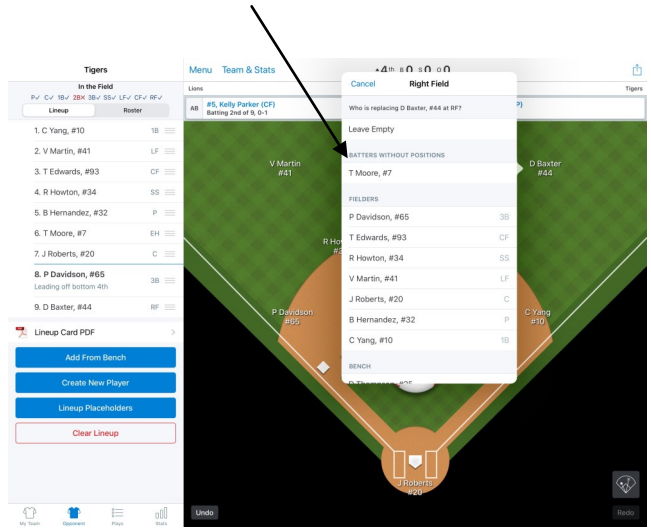
Field section—(cont.)

(eg=4-3 complete)

Tap next position (eg=9)

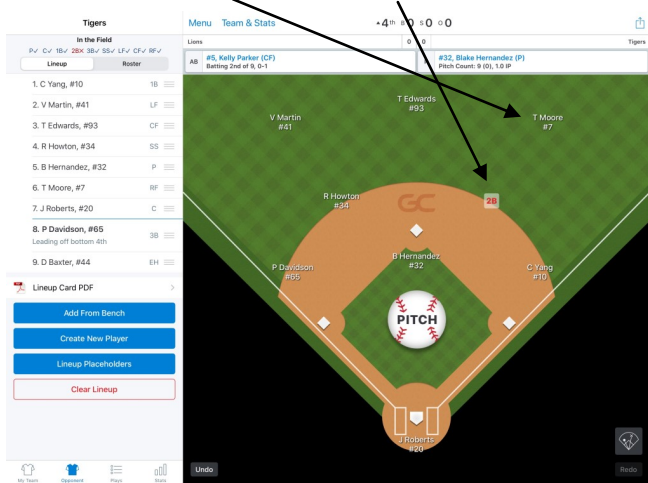


Select player—Batters without positions

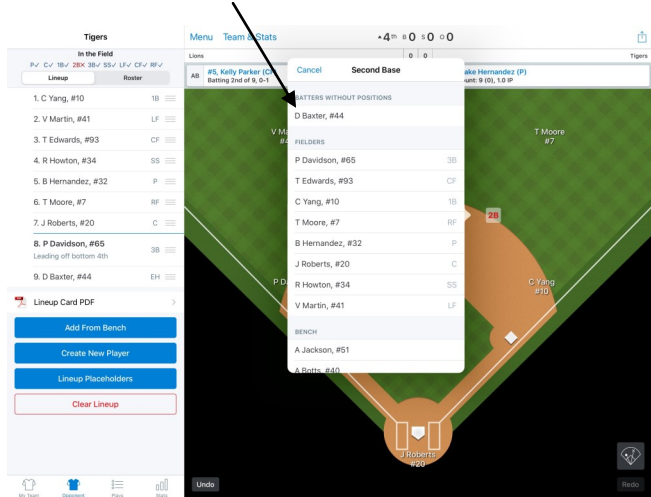


(eg=3-9 complete)

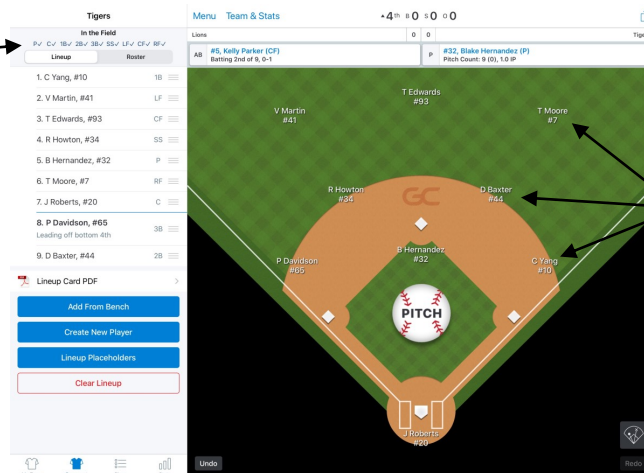
Tap next position (eg=4)



Select player—Batters without positions



Check all positions filled



All changes complete—no empty fielding positions

SUBSTITUTIONS and FIELDING CHANGES

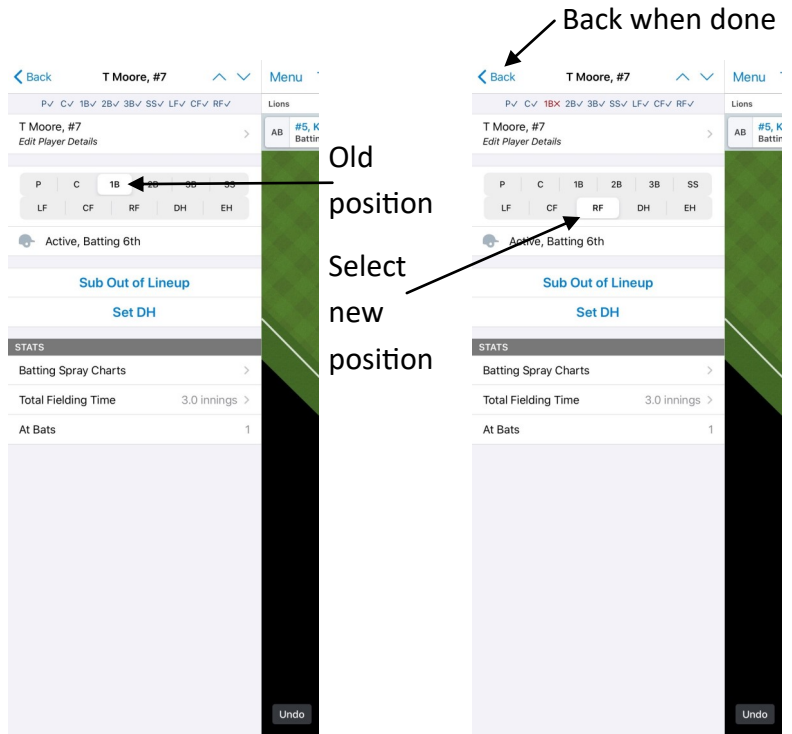
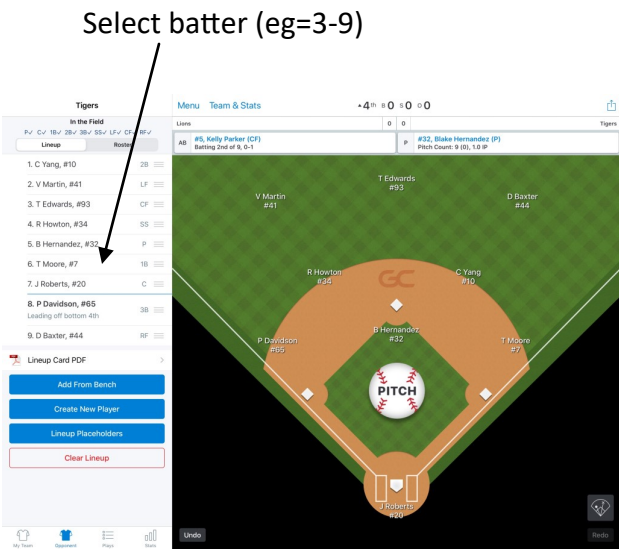
Fielding Changes (cont.)

Side section—changes can be done in any order.

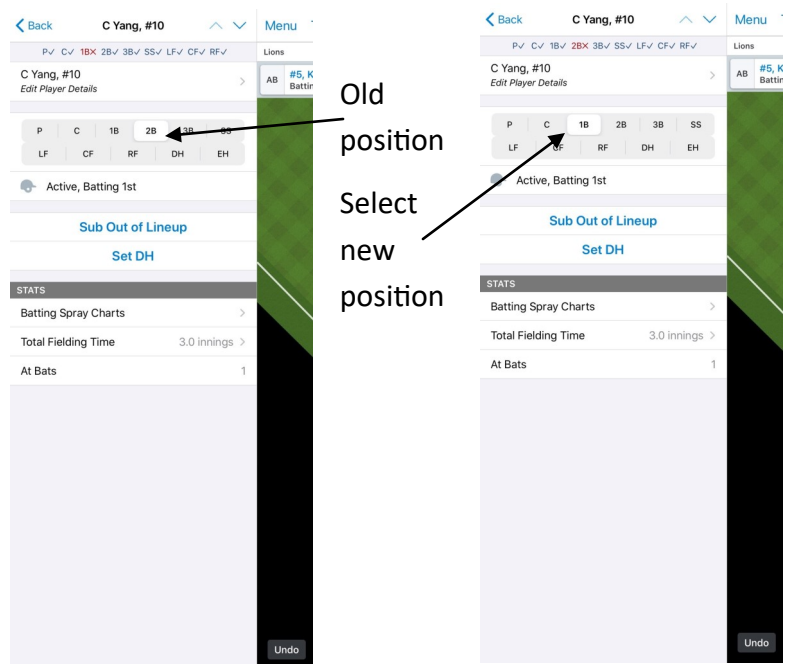
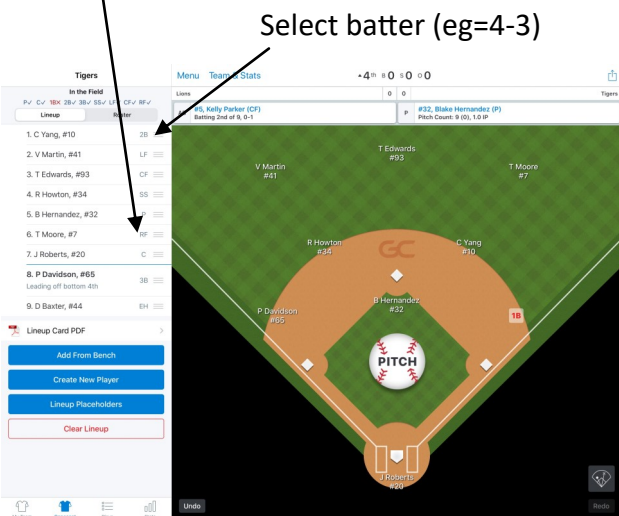
Tap the name of the player changing positions. Tap the new fielding position for this player. Tap Back to return to the line up. Repeat for all players changing positions.

Note that a players position may automatically change to EH due to other changes.

Example: 4-3, 3-9, 9-4 (entered as 3-9, 4-3, 9-4)



Position changed.



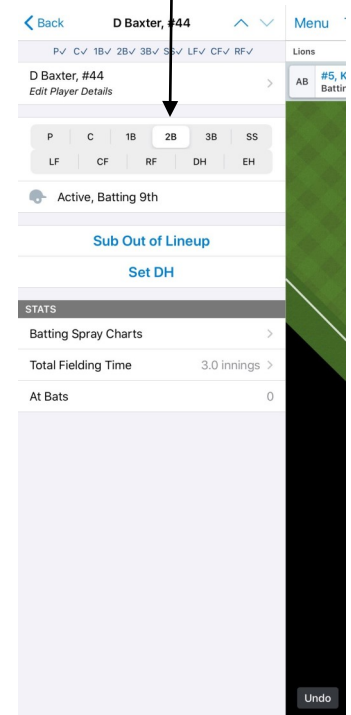
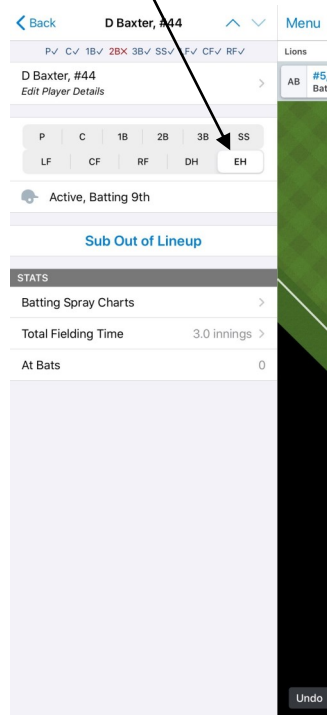
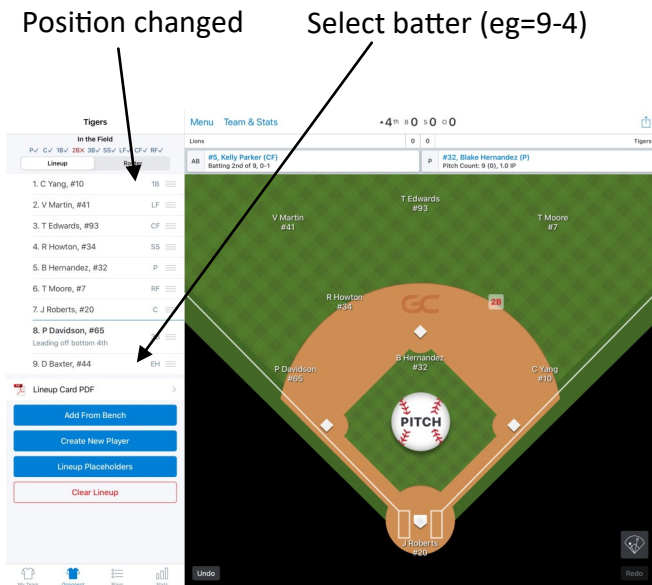
SUBSTITUTIONS and FIELDING CHANGES

Fielding Changes (cont.)

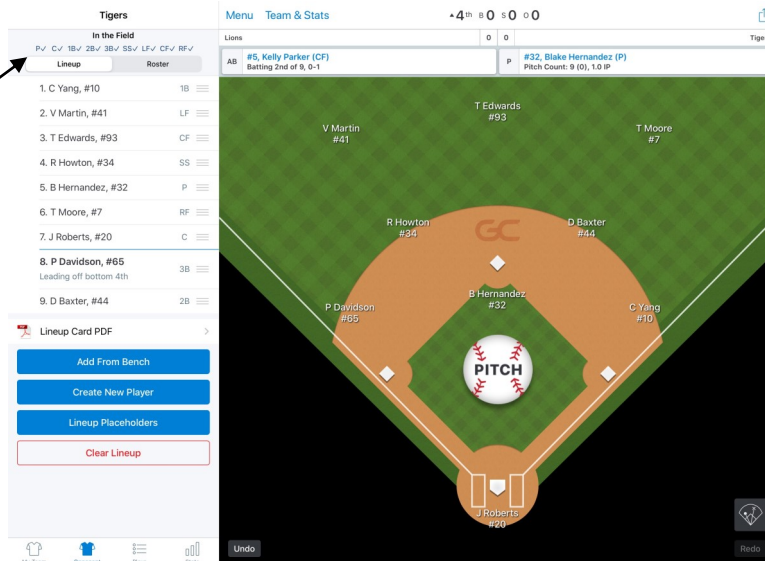
Side section (cont.)

Changed to EH when other player moved to RF

Select new position



Check all positions filled



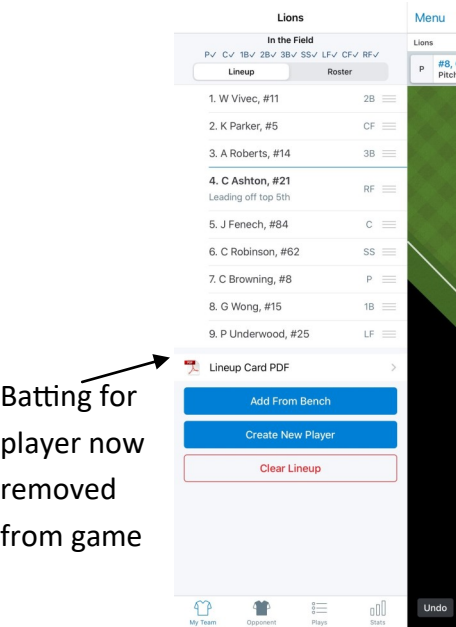
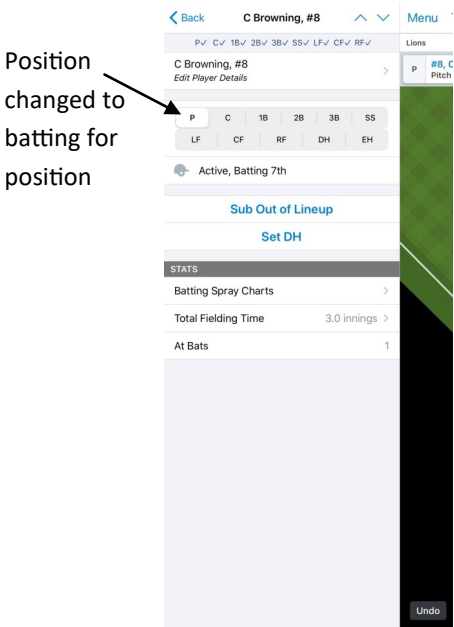
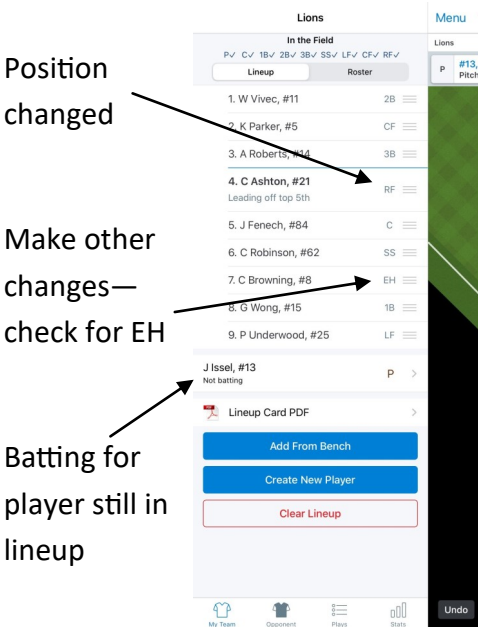
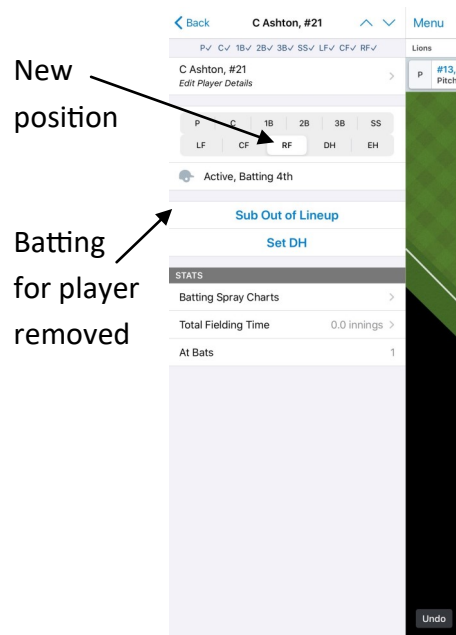
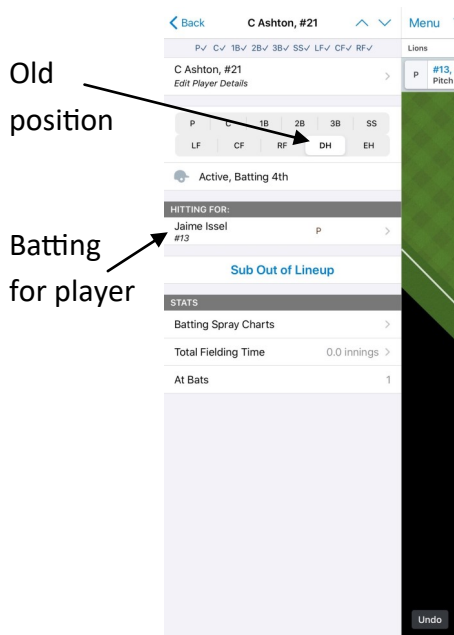
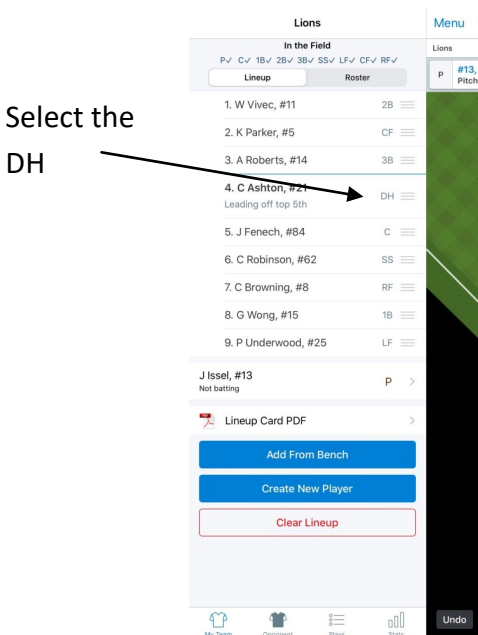
SUBSTITUTIONS and FIELDING CHANGES

Designated Hitter (DH)

If the DH is replaced when they are due up to bat, the change can be done as per Sub-Pinch Hitter. The new player will become the DH.

When the DH comes into the game as a fielder:

Use the side section to change the position from DH to their new fielding position. Make any other changes required. When the position of the player the DH was batting for is allocated to another player, they will be removed from the game.

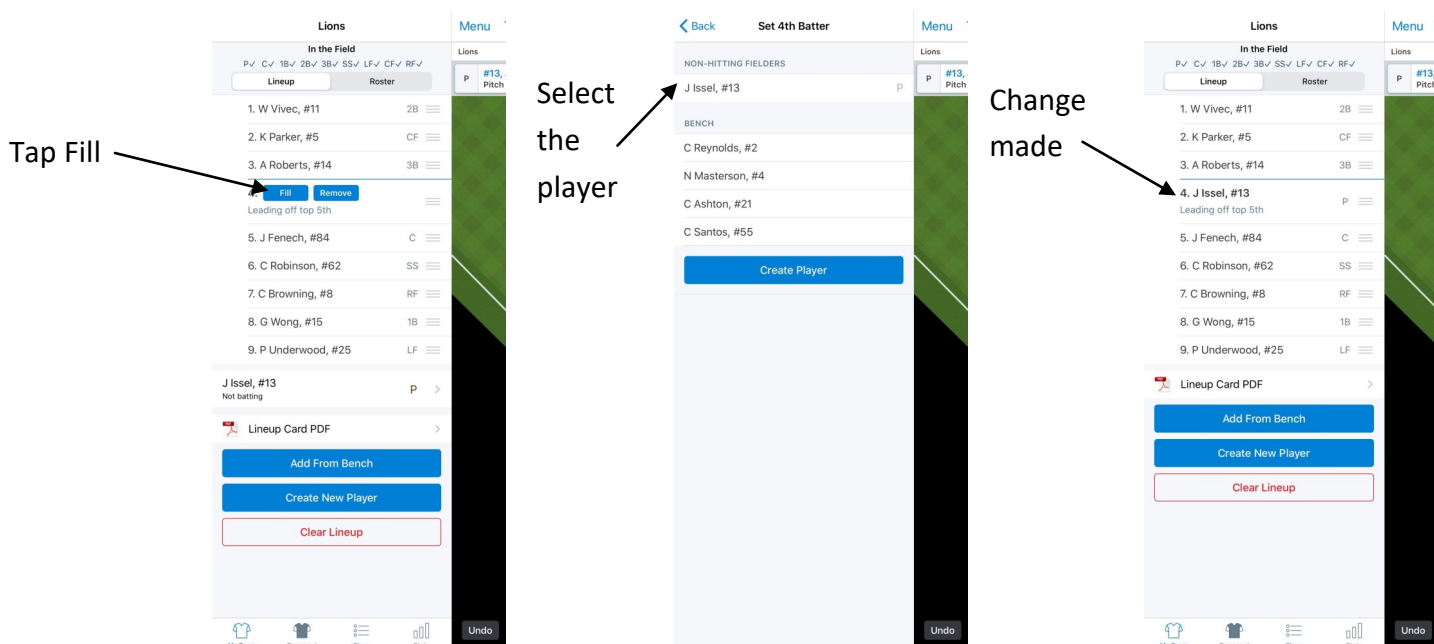
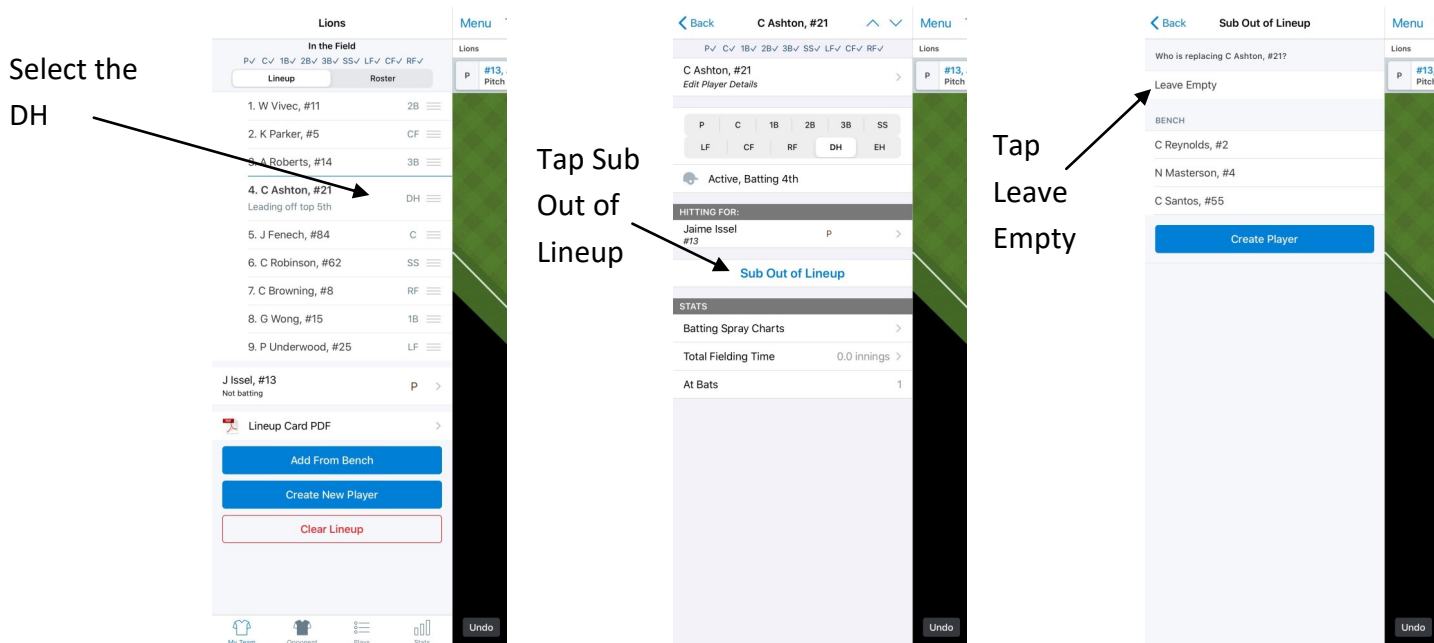


SUBSTITUTIONS and FIELDING CHANGES

Designated Hitter (DH) (cont.)

When the DH is removed from the game and the batting for player is now batting for themselves:

Use the side section and tap the player that is the DH. Tap Sub Out of Lineup. Tap Leave Empty. The lineup is now shown with no player in that batting position. Tap Fill. Tap the player required—should be listed under Non-Hitting Fielders. Make any other changes required.

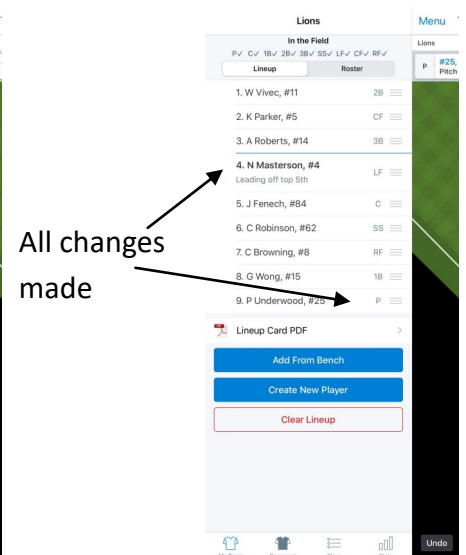
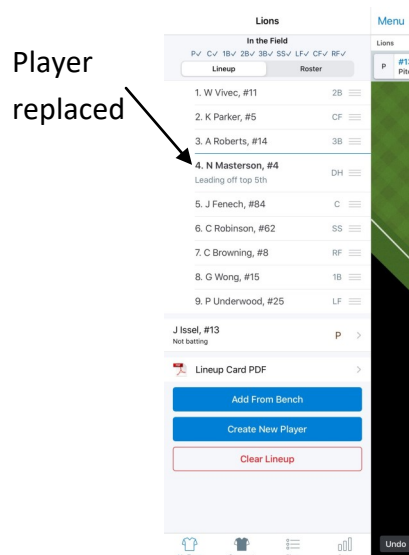
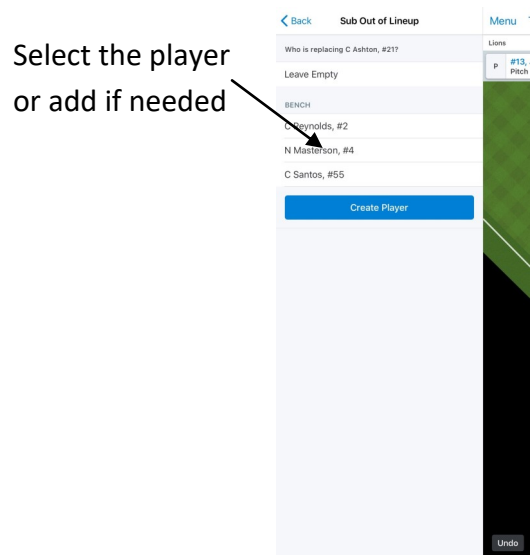
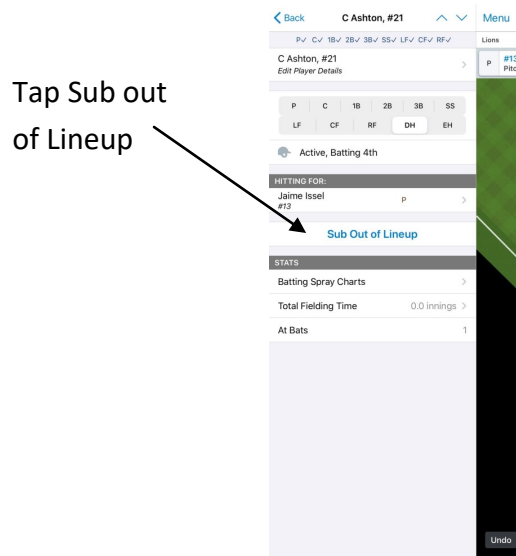
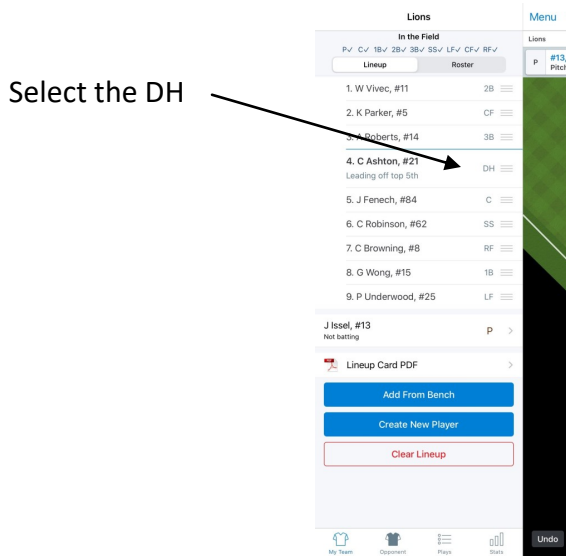


SUBSTITUTIONS and FIELDING CHANGES

Designated Hitter (DH) (cont.)

When the DH is removed from the game and the batting for player is replaced:

Use the side section and tap the player that is the DH. Tap Sub Out of Lineup. Tap the player replacing the batting for player (or create if needed). Make any other changes required as per When the DH comes into the game as a fielder.



GAMECHANGER—LINE UPS, SUBSTITUTIONS and FIELDING CHANGES

Change Control

Version 1	May 2020	Original
Version 2	Aug 2023	Update main pic for new GC